

AUSTRALIAN HAMPSHIRE DOWN BREEDERS ASSOCIATION

2016 January Newsletter



Hello all, Welcome to our January Addition of the 2016 newsletter.

The AGM was held on the 27th of November 2015 at Devonport Show, Tasmania. Minutes to be circulated shortly. The 2015 flock book should be in everyone's hands by now and you will be able to see that our annual ewe numbers have dropped ever so slightly, but is still remaining quite consistently in the 1200+ for the last five years.

This year the Best Mainland Ram and Ewe of the Year Award is being held. Six major shows over three states are where the points can be won with the Geelong Royal being the final show where the awards will be presented. An email will be sent shortly with all the rules and point scheme for the award. This awards will be presented at the Geelong Royal as it will also this year's AGM which is also being held at the Geelong Royal.

Our four schools have been set a challenge, where they must design a logo for our Facebook Page (profile picture – so preferably square in shape). They have until the 31st of March to get their ideas in. They can be sent to either Barry Evans (sgr55@bigpond.com.au) or myself at (aurorapark178@gmail.com).

Merry Christmas to all! - Mathew Hill

ROYAL MELBOURNE SHOW

2015 Royal Melbourne Show Report

The Sheep competition for the Royal was ran over five days with arrivals on the Thursday afternoon, scanning and inspection on the Friday, Judging Saturday, ASSBA & Interbreed Judging Sunday and the departure on the Monday afternoon. Two studs exhibiting, Jeff & Brad Johnson (Johnos) & Mathew Hill (Aurora Park), taking a combined 22 Hampshire's.



CHAMPION EWE, ROYAL MELBOURNE



The Royal Agricultural Society of Victoria (RASV) put on a tremendous show with its largest entries since 2006 with 621 exhibits not including lambs at foot which all ewes over 1.5 had to have which would have brought the total to over 700. On the Friday night before the main judging and after the Lambplan classes a free BBQ was held for the exhibitors and then a

fine dining experience in the MasterChef building for the Exhibitors Dinner on the Sunday night. The main course was lamb of course! The desert made all the Hampshire & Suffolk breeders very happy (See photo on the right! Not sure what it was made of but it was delicious!)

Prize money of \$35 for first place, \$25 for second and \$15 for third was awarded to all ordinary classes with \$20 and Rosette for the Champions. Results of this year's show can be found on the next page.

Next year's show will possibly have an American Judge from Poe's Hampshire's, Indiana. To be confirmed this year.



2015 ROYAL MELBOURNE SHOW (VIC)

Champion Ram – Johnos (Ram under 1 ½ yrs in shorn) (Supreme)

Reserve Champion – Johnos (Ram over 1 ½ yrs shorn)

Champion Ewe - Johnos (Pair of Ewes)

Reserve Champion – Aurora Park (Ewe over 1 ½ yrs, with lamb)

ASSBA SHORTWOOL INTERBREED (Present breeds: Hampshire Down, Suffolk, Southdown, Shropshire, Dorset Down, Wiltshire Horn, South Suffolk) All 1st exhibits eligible from each breed for each class.

The Suffolk's managed to take home every 1st placed sash in this interbreed, but the Hampshire's were close behind them with most of the seconds and a third.

2ND – Johnos – Ram over 1 ½ yrs shorn

2ND – Johnos – Ram under 1 ½ yrs shorn

2ND – Johnos – Ewe under 1 ½ yrs in wool

3RD – Aurora Park – Ewe over 1 ½ yrs shorn, with lamb

2015 HORSHAM SHOW (VIC)

Champion Ram – Aurora Park (Ram under 1 ½ yrs in wool)

Reserve Champion – Aurora Park (Ram Lamb)

Champion Ewe – Aurora Park (Ewe over 1 ½ yrs shorn)

Reserve Champion – Aurora Park (Ewe under 1 ½ yrs in wool)

2015 ROYAL GEELONG SHOW (VIC)

Champion Ram – Johnos (Ram under 1 ½ yrs in wool)

Reserve Champion – Jurambula (Ram under 1 ½ yrs shorn)

Champion Ewe - Jurambula (Ewe under 1 ½ yrs in wool)

Reserve Champion – Johnos (Ewe under 1 ½ yrs in wool)

Champion Lamb – Langwarrin (Elizabeth Murdoch College) (Ram Lamb)

Reserve Champion – Boonong Park (Ewe Lamb)

Supreme Exhibit – Jurambula (Ewe under 1 ½ yrs in wool)



CHAMPION RAM, HORSHAM



SUPREME EXHIBIT, ROYAL GEELONG



CHAMPION EWE, EUROA

2015 EUROA SHOW – 125TH ANNIVERSARY SHOW (VIC)

Champion Ram – Glen West (Ram over 1 ½ yrs)
Champion Ewe – Glen West (Ewe under 1 ½ yrs)

Interbreed Pair – Glen West

2015 DOOKIE AGRICULTURAL SHOW (VIC)

Champion Ram – Glen West (Ram under 1 ½ yrs shorn)
Champion Ewe – Glen West (Ewe under 1 ½ yrs shorn)

Supreme Champion Ram – Glen West
Supreme Group of Three – Glen West
Most Successful Exhibitor of Show – Glen West

2015 DANDENONG SHOW (VIC)

Champion Ram – Boonong Park (Ram over 1 ½ yrs)
Reserve Champion – Langwarrin (Elizabeth Murdoch College) (Ram under 1 ½ yrs shorn)
Champion Ewe – Langwarrin (Elizabeth Murdoch College) (Ewe under 1 ½ yrs shorn)
Reserve Champion – Boonong Park (Ewe over 1 ½ yrs shorn)

Supreme Pair of Ewes – Boonong Park

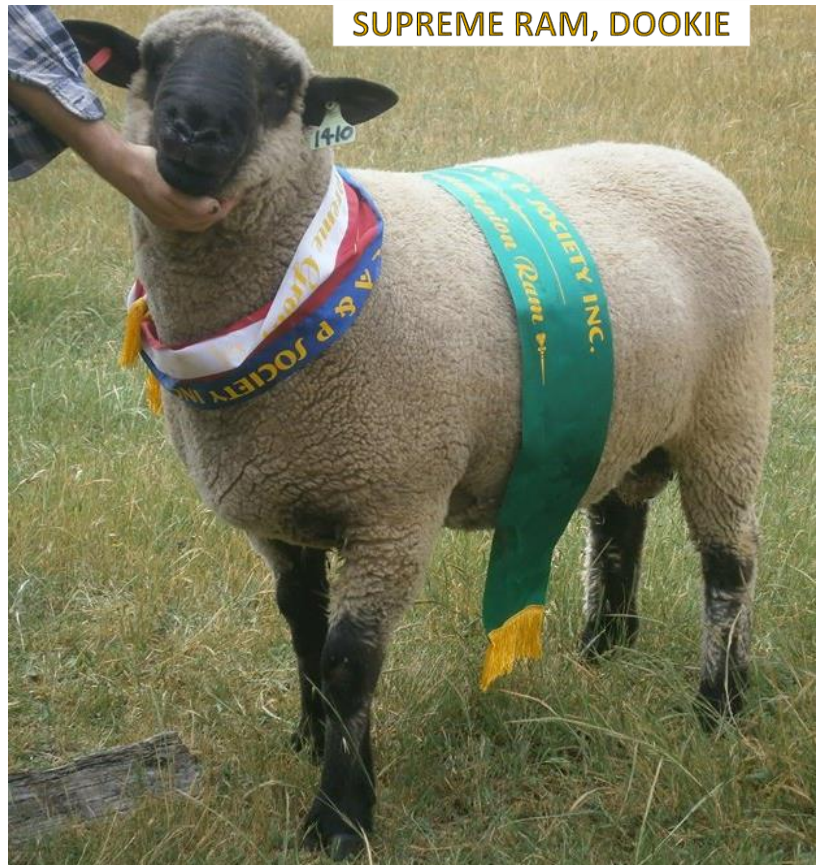
2015 CLUNES SHOW (VIC)

Champion Ram – Boonong Park (Ram over 1 ½ yrs)
Champion Ewe – Boonong Park (Ewe over 1 ½ yrs shorn)

2015 WHITTLESEA SHOW (VIC)

Champion Ram – Boonong Park (Ram over 1 ½ yrs)
Reserve Champion – Hayes (Ram over 1 ½ yrs)
Champion Ewe – Boonong Park (Ewe over 1 ½ yrs shorn)
Reserve Champion – Boonong Park (Ewe under 1 ½ yrs shorn)

Supreme Shortwool Group – Boonong Park



SUPREME RAM, DOOKIE

CHAMPION RAM, WHITTLESEA



CHAMPION EWE, WHITTLESEA

2015 ROYAL ADELAIDE SHOW (SA)

Champion Ram – Summerville (Jordan River Learning Federation) (Ram over 1 ½ yrs)

Reserve Champion – Summerville (Ram under 1 ½ yrs in wool)

Champion Ewe – Telpara (Ewe under 1 ½ yrs shorn)

Reserve Champion – Telpara (Ewe under 1 ½ yrs shorn)

CHAMPION RAM, ROYAL ADELAIDE



RESERVE RAM, ROYAL ADELAIDE

2015 ROYAL HOBART SHOW (TAS)

Champion Ram – Summerville (Jordan River Learning Federation)

Reserve Champion – Summerville

Champion Ewe – Summerville

Reserve Champion – Summerville

2015 LONGFORD SHOW (TAS)

Four Hampshire Down breeders present with over 50 Hampshire exhibits.

Champion Ram – Summerville (Jordan River Learning Federation)

Reserve Champion – Summerville

Champion Ewe – Summerville

Reserve Champion – Summerville

Supreme Exhibit in Show - Summerville

Supreme Interbreed Ram - Summerville

Supreme Interbreed Ewe - Summerville

Supreme Interbreed Group of Three – Summerville



**CHAMPION RAM,
ROYAL ADELAIDE**

I found this image on Twitter. It is taken by a journalist from the Stock Journal who is shocked at the sheer size of the Champion Hampshire Ram in the interbreed line up. He dwarfs the Suffolk ram beside him which weighed 137kg, I do not know what the Hampshire weighed, but I know he must be pretty heavy! A very big well done to the students from Jordan River Learning Foundation for their commitment to make the long journey across the Strait to the Adelaide Royal.

2015 LAUNCESTON SHOW (TAS)

Champion Ram – Summerville (Jordan River Learning Federation)

Reserve Champion – Unknown

Champion Ewe – Summerville

Reserve Champion – Summerville

Reserve Interbreed Ewe – Summerville

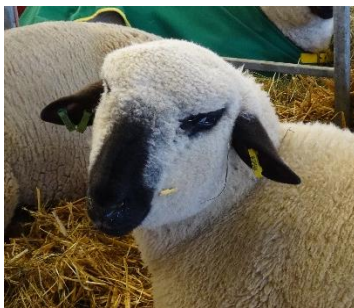
Woolly Faces or Bare Faces???

Nearly every show I attend there always seems to be the many mixed thoughts of our sheep having woolly or bare faces. The ASSBA Flock Book Standards for wool is as follows. Wool – White, of moderate length, close and fine texture, extending over the forehead and belly, the scrotum of Rams being well covered. Suggested wool count 56's-58's.

My interpretation of the standard is it only mentions the forehead being covered. Which means the wool should follow the top of the neck line over the poll and up to the front of the forehead (Just over the top of the eye). As for the small channel of wool that runs from the side of the forehead/eye to the nose there is no standard on what is right and wrong. A very well written piece of the correlation of stud location to the preference of wool on a Hampshire's face was written by Jan Summers (TAS) and was published in the March 1995 newsletter can reveal why some breeders like that wool there and some do not.

- As breeders our 'bread and butter' lies in the sale of flock rams. Buyers of flock rams tend to place a higher preference to facial cover in their selections. Obviously some states have a higher grass seed problem than others and these buyers require a fully wide, open facial channel from the eye forward. States with colder climate and even snowy conditions require 'hood cover' to shelter the eyes from the elements. – Jan Summers. (1995)

This shows why many animals in the United Kingdom have very woolly faces compared to American Hampshire's. Even the New Zealand Hampshire's are much cleaner in the face than the British Hampshire's. Location of stud to the climate is key to the type of sheep produced. (Refer to below images).



British Hampshire Down



American Hampshire



New Zealand Hampshire

The first thing my ram buyers always look for is the rams which have minimal wool on their faces, then followed by height (Which I will mention annoys me some days as some very good rams are left behind that should be going to commercial operations). Their need for bare faces is because many of my buyers have large grass seed burdens, although I have found the Hampshire's to be very fussy and selective when they graze to minimize the potential of getting grass seeds near their eyes.

Commercially it is a wise move for myself to breed rams with a very open face free of wool as this is how I can sell rams to more operations that are looking around for different breeds. My location also makes it crucial for me to do so, whereas southern studs in colder climates may do the opposite.



Our Facebook page currently has...

504 Likes!

If you would like any photos of your flock, shows, sheep for sale or articles posted by the page, please email Mathew Hill (aurorapark178@gmail.com). Same with the next Newsletter.

Breeders with Facebook pages

Flock 160 – [Summerville](#) TAS
 Flock 178 – [Aurora Park](#) VIC
 Flock 183 - [Jurambula](#) NSW
 Flock 185 – [Johnos](#) VIC
 Flock 202 - [Wollondale](#) NSW
 Flock 203 - [Rolling Hills](#) NSW
 Flock 205 – [Vale Hill](#) VIC
 Flock 210 - [Boonong Park](#) VIC
 Flock 211 - [Hayes](#) VIC
 Flock 212 – [Glen West](#) VIC

LIFE MEMBERS

Elizabeth Long, Torwood (Flock 38)
 Louise Adams, Torwood (Flock 38)
 Frances Murray, Burrandool (Flock 39)
 Rodney Summers, Marananga (Flock 117)
 Dianne Huett, Cote Hele (Flock 135)

AUSTRALIAN HAMPSHIRE DOWN BREEDERS ASSOCIATION 2016 OFFICE BEARERS

| | | | |
|----------------|--------------|---|---|
| PRESIDENT | Barry Evans | ph 03 6491 2654 | e sgr55@bigpond.com |
| VICE PRESIDENT | Helen Raven | ph 02 6929 6106 | e: hreven@harboursat.com.au |
| SECRETARY | Karen Harman | ph 03 6442 1543 | e: info@hampshiredown.com.au |
| TREASURER | Louise Adams | | |
| WEB PAGE | | http://www.hampshiredown.com.au/ | |
| NEWSLETTER | Mathew Hill | ph 03 53843202 | e: aurorapark178@gmail.com |
| FACEBOOK PAGE | | | |

<https://www.facebook.com/pages/Australian-Hampshire-Down-Breeders-Association/847405745327365>